

Spina

design Sergio Ricci



- General Informations
- Colours
- Packing
- Technical Specifications
- Laying and Maintenance Suggestions

CVS ITALIA Srl

REGISTERED OFFICE

Via Giambattista Vico, 22
00196 ROMA
ITALY

ADMINISTRATIVE HEADQUARTERS

Via Gregorio VII, 508
00165 ROMA - ITALY
T +39 06 6622475
F +39 06 6620118

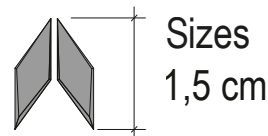
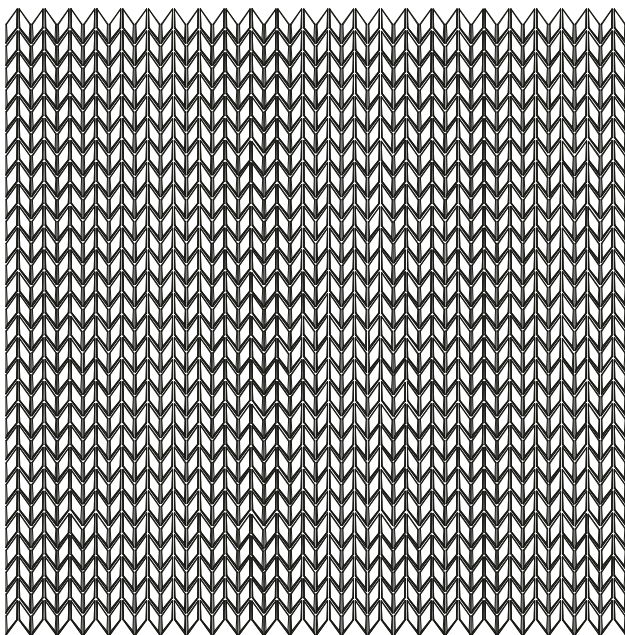
SHOW ROOM

Via Sacco e Vanzetti, 73
41042 FIORANO MODENESE (MO)
info@sergiosavino.it
www.sergiosavino.it

Spina

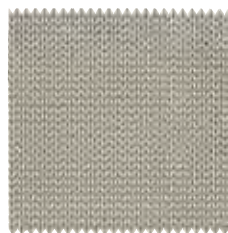
General informations

collection	Micromosaici
design	Sergio Ricci
production	Artisanal
materials	Mixture of ground natural stones (marble, granite and travertine) and water-based resins. No heat treatment applied; the surface is treated with an acrylic lacquer to obtain the required colouring.
thickness	5 mm.
size	mesh mounted sheet 28,5x28,3 cm.
specifications	5 Naturali colours + 4 Metallic colours, 15 colours on request available. Each sheet contains 1344 elements (small pieces) of different thickness and level.
uses	Decoration of internal walls in private homes and public buildings, bathrooms, shower cubicles, hammam, kitchens, furnishings like doors, bar counters, interior finishing in the shipbuilding sector.
Compliant with following standards	DIN-51094; Resistenza dei colori alla luce; RESISTENTE; 5672/16 del 25/05/2016 DIN-51097:1992; Scivolosità a piedi nudi; "C" Angolo Scivolamento 23°; 4237/15 del 27/04/2015 ISO-16000-9:2006; Emissione VOC; CLASSE A; RP 0033/16 01.1 del 14/03/2016



Spina

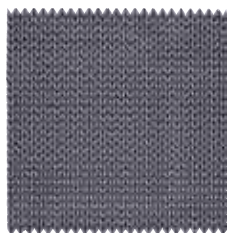
Colours



Spina
Carrara
M00152MRMUW
NCS S 0804-Y10R



Spina
Travertino
M00152TVT
NCS S 1615-Y10R



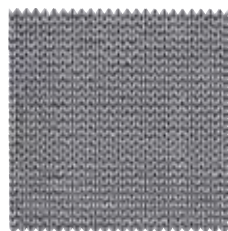
Spina
Grigio Medio
M00152GM
NCS S 4502-N



Spina
Antracite
M00152GC
NCS S 7500-N



Spina
Nero Africa
M00152NA
RAL 9005



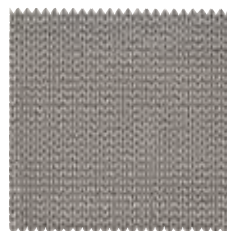
Spina
Silver
M00152VAL
RAL 9006



Spina
Aurum
M00152VOL



Spina
Old Bronze
M00152KOB
RAL 2013



Spina
Alluminium
M00152KSG

Available only on request natural and metallic colours



AS
Arancio
Scuro



MO
Moka



VT
Verde
Traffico



MS
Mustard



LL
Lilla



BL
Blu



SA
Sage
Green



MD
Mud



KOS
Old Silver



KRBB
Red Brown
Bronze



LB
Light
Bronze



PB
Purple
Brown



BC
Bright
Copper



GB
Golden
Brown

PACKING

size	sheet/box	Mq/sheet	Mq/box	weight/sheet	weight/box
28,5x28,3 cm	6	0,092	0,55 Mq.	0,514 Kg.	3,30 Kg.

Spina

Laying and maintenance suggestions

The information contained in this manual will assure that the mosaics produced by CVS ITALIA S.R.L. (made from a mixture of ground marble and resin) are correctly installed.

PRELIMINARY VERIFICATION OF THE LAYING SURFACE

Before proceeding with the installation, please check that the laying surface possesses the following characteristics:

SMOOTHNESS

It is fundamental that the laying surface will be absolutely smooth and flat. For these 6 mm thick mosaics, surface irregularities must not exceed +/- 1.5 mm. Slight unevenness can be corrected using the adhesive itself as a levelling agent, while more pronounced irregularities (→ 5 mm) will need to be corrected using a levelling cement-based grout.

MAXIMUM CURING AND HUMIDITY LEVELS

Regardless of what kind of substrate you are dealing with, the ageing process must be completed before installing the mosaics, to assure that it is stable and it will not shrink after the mosaic sheets have been laid. When using traditional cementitious screeds, curing time can vary from 7 up to 10 days each centimeter of thickness, depending on the season.

Waiting time can be shortened by using special, normal-hold, quick-drying hydraulic adhesives rather than Portland cement, thus allowing mosaics to be laid after 24 hours only. For this kind of substrate, humidity levels must not exceed 3%.

In case of concrete surfaces, curing takes at least 6 months.

Maximum residual humidity in gypsum-based substrates, such as anhydrite screeds or gypsum plasters, must not exceed 0.5%. In case of premixed, cement-based plasters, please abide by the manufacturer's indications, with regards to curing, drying times and mechanical resistance.

SUBSTRATES CLEANING

Substrates must always be perfectly clean and smooth, with no chipping or traces of paint, wax, grease, oils or anything else that could compromise the adhesive properties of the binding agent. Concrete substrates must not have any residue of release agents.

It is always advisable to preventively clean the surfaces with a hot-water jet-spray cleaner or with a sandblasting machine. Ceramic-tiled surfaces must be thoroughly de-greased with an alkaline detergent or with a caustic soda solution and then rinsed and dried.

MECHANICAL RESISTANCE

Regarding cement-based or gypsum-based plaster applied to an internal wall, it must have an adhesion to the substrate of at least 0.5 N/mm². In case of external wall application on plaster, make sure that the plaster itself is suitable for mosaics.

To ensure a good adhesion, the surface of the substrate must not generate powders. Suitable consolidating primers in dispersion can be used to improve this feature.

INSTALLATION GUIDE

After having chosen the appropriate adhesive and prepared the mixture according to the indications on the package or technical data sheet, it is advisable to apply the adhesive mortar to the laying surface with the smooth edge of the trowel, to even the colours, and then immediately after apply the other product by means of a 3.5 mm (cod. 121/D 3.5x3.5) notched trowel. Install the mosaic sheets, tapping them into place with a rubber trowel (COD. 946GR) to guarantee perfect adhesion, thus eliminating air bubbles and keeping the adhesive from flowing back into the joints between the tiles, make sure to leave sufficient space for subsequent grouting.

will follow →

Spina

← following Laying and mainenance suggestions

HAMMAM INSTALLATION

The hammam or Turkish bath is a prominent feature in wellness programs, where people relax in extremely humid, warm-to-hot rooms (from 30°C to 60°C).

The interiors of these structures often consist in prefabricated panels or forms (benches, beds, niches, etc.) made of expanded polystyrene covered with impermeable material to which mosaics may be directly applied. Here again adhesives should be used, and grouting made exclusively with epoxy grout.

INSTALLATION IN WET AREAS (BATHROOMS AND SHOWER CABINETS)

Installation in wet areas such as bathrooms or shower stalls requires the use of the two-component epoxy-polyurethane adhesive or of the two-component epoxy grout.

Subsequent grouting should be done using epoxy grout.

GROUTING

Before grouting the joints, it is essential to verify that the adhesive used in the installation process is completely dry and hard and that also the joints are perfectly dry. At this point, manually remove any residual adhesive that may have leaked into the joints.

CVS ITALIA S.R.L. recommends the grouting of its mosaics with epoxy grout, because it guarantees the following advantages:

- Bright, uniform colour
- Particularly wide range of colours choice
- Practically zero water absorption
- Extremely easy to apply and clean
- Highly durable joints for long-lasting results

CAUTION:

1. Always carefully follow the indications on the package or technical data sheet given by producers.
2. Make sure that work site conditions are suitable for mosaic installation.

HOW MUCH ADHESIVE AND GROUT SHOULD BE USED

The quantity of adhesive indicated here refers to applications using a notched 3.5x3.5 mm (cod. 121/D 3.5x3.5) mosaics trowel.

The information contained in the current document have been given in good faith and are based on accurate research carried out by CVS ITALIA S.R.L. in its own labs. However, since external conditions and methods of use are beyond the company's control, these information are not intended to replace indispensable preliminary testing to be carried out on-site, to assure that the product is fully suitable and safe for the specific application. CVS ITALIA S.R.L. shall NOT be held responsible for results obtained by other users, whose operating methods cannot be controlled by CVS itself. It shall remain the sole responsibility of the end-user to determine whether or not the product is suitable for their intended applications and to take all the necessary precautions to safeguard people and things from any danger associated with the use of the product. It is therefore highly advisable that each user will test its potential application before using it. Application recommendations must not be seen as an incentive to infringe any patent rights. The information contained in this document are subject to change without prior notice. These tests have been carried out on the materials as they are typically manufactured and sold, kept in good condition and not subjected to damage caused by improper storage or transport.